

CELEGON PATENT QUALITY AND DESIGN MADE IN ITALY

CELEGON supplies the furnishing sector with high-quality, innovative technological solutions. The ERGON® roto-slide system enjoys a world reputation. The hardware allows the door to swing and slide open and shut, saving 50% of the space. CELEGON manufactures and tests its hardware in-house, with extremely rigorous testing of the system's strength and sealing. The Community line of doors, designed and made by Celegon Srl, look great and meet the planning requirements of public places and spaces: design, strength, ease of maintenance and cleaning. CELEGON Community doors grace thousands of public buildings, to the entire satisfaction of their users.

ERGON®, the door that swings and slides, is ideal for interior design in conformity to health and safety standards and regulations. ERGON® lends itself especially to interiors planned for people with mobility difficulties.

ERGON®
COMMUNITY

NORMAL is built to cope with the stresses and strains which commonly occur in public buildings. But this door also has a long and outstanding track-record of exceptional performance in other sectors.

NORMAL®
COMMUNITY

The Community line of sliding doors, fitted inside or outside the wall, reproduce the looks and technical features of the ERGON® and NORMAL doors.

**SLIDING
DOORS**

The system can be mounted on the stile of a Community double-leaf door. With just one click, the secondary or slave leaf opens and stops by itself, moving the leaf into the closed position.

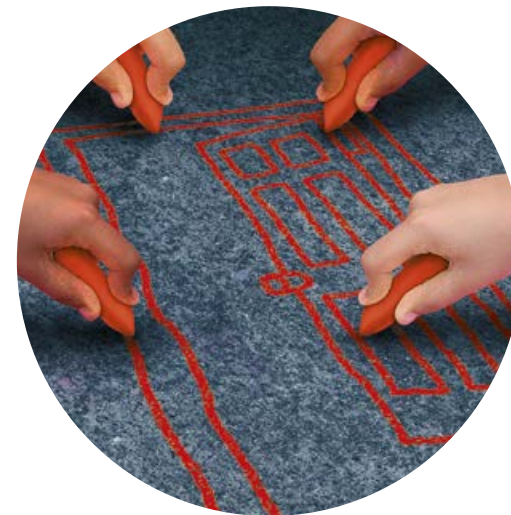
**PUSH
&GO!**



CELEGON
SMART OPENING SYSTEMS

Community line is an idea from CELEGON
30035 Mirano (Venezia) | Via G. Galilei, 6 - Z.I.
T +39 041 572 8404 | F +39 041 572 8522
www.celegon.it | info@celegon.it

24414 Visual Comunicazione - VE



**COMMUNITY
LINE**

doors and opening systems
with the community in mind

by Celegon



ONE LINE ENDLESS POSSIBILITIES

There are three main options in the Community line, to make the best use of solutions to different requirements. The ERGON Community, NORMAL Community and external/internal sliding doors allow access to rooms, door leaf opening, maintenance and cleaning in a few quick and easy movements. Clean lines, concealed hinges and a vast choice of colours and jamb types make the COMMUNITY line exceptionally versatile for use a very wide range of situations.

CELEGON PRESENTS THE NEW LINE FOR COMMUNITIES

Hospitals, nursing homes, recreation centres and offices are busy and crowded places. Access to different rooms must be simple and conform current safety regulations. Doors for these busy premises have to be ergonomically designed, with maximum strength and top quality. CELEGON's technical staff have devised and implemented hi-tech solutions to the particular requirements of these environments.



**SOLUZIONI AT YOUR
FINGERTIPS**

**CUSTOM
SOLUTIONS**
AT NORMAL PRICE

EASY TO MAINTAIN

STRAIGHT AND FLUSH

Versatile, with no projecting edges and consisting entirely of flush-fitting components, ERGON® Community is the ideal solution for interiors where health and safety legislation (Legislative Decree 81/08) and hygiene regulations demand fast and frequent antiseptic cleaning.

In hospitals, care homes, schools, nurseries and offices, ERGON® Community opens the door to simplicity. Its ease of cleaning makes amenities pleasant to use for both residents and staff.

RELEASING NEW SPACE

A TECHNOLOGICAL INNOVATION

The simultaneous rotation and swing movement of the door leaf during the opening and/or closing stages saves 50% of the layout space

This makes even small rooms accessible.

The leaf is simple and easy to move, and runs much more smoothly than a traditional door with a stop.

IDEAL FOR ALL

FAREWELL TO BARRIERS

The door opens from both sides, allowing access to and from the same room with a simple push of the door leaf, which closes again with ease.

The leaf moves in a longitudinal arc as the door is pushed open from either side, leaving room for manoeuvre and allowing through traffic on a scale previously inconceivable.

Two-way opening and space saving come in response to the problems associated with main exit routes and overcoming structural barriers. In fact a person constrained by a wheelchair or with mobility difficulties will be able to open or close the door leaf with a gentle push.

ERGON® Community SINGLE-LEAF MODEL Sample dimensions							
	Clear width LP	700	800	900	1000	1100	1200
	Internal width of subframe LFM	835	935	1035	1135	1235	1335
	Space requirement of fully open leaf C	420	420	520	545	570	670
	Clear height HP	2000	2050	2100	2150	2200	
	Height of subframe off ground HFM	2072	2122	2172	2222	2272	
Minimum viable measurement LP 650							

ERGON® Community TWIN-LEAF MODEL Sample dimensions						
	Clear width LP	asymmetrical leaves			symmetrical leaves	
		850	850	900	900	
	Total clear width LPD	1200	1300	1200	1300	
	Internal width of subframe LFM	1380	1480	1380	1480	
	Clear height HP	2000	2050	2100	2150	2200
	Height of subframe off ground HFM	2072	2122	2172	2222	2272

NORMAL Community SINGLE-LEAF MODEL Sample dimensions							
	Clear width LP	700	800	900	1000	1100	1200
	Internal width of subframe LFM	835	935	1035	1135	1235	1335
	Clear height HP	2000	2050	2100	2150	2200	
	Height of subframe off ground HFM	2072	2122	2172	2222	2272	

NORMAL Community TWIN-LEAF MODEL Sample dimensions						
	Clear width LP	asymmetrical leaves			symmetrical leaves	
		850	850	900	900	
	Total clear width LPD	1200	1300	1200	1300	
	Internal width of subframe LFM	1380	1480	1380	1480	
	Clear height HP	2000	2050	2100	2150	2200
	Height of subframe off ground HFM	2072	2122	2172	2222	2272

THE ADVANTAGES OF AN ERGON DOOR
QUALITY COMPONENTS

01 Door mechanism from the ERGON® Community series controls swing/slide movement of the leaf. Fitted with C-trim aluminium track with four guides and roller with six bearings to swing and slide perfectly.

02 Hollow-core door with a finished thickness of 50 mm consisting of panel with honeycomb or HD polystyrene core, surrounded by a solid hardwood frame. The upper and lower rails are in marine-grade plywood treated with water-repellent paint. The panel is clad with 5 mm MDF with an HPL laminated plastic surface at least 0.9 mm thick. Protecting the vertical sides of the leaf is a thick aluminium profile fitted with special sealing brushes, which wraps around the leaf itself. The leaf edges are flush with the panel surface.

03 In the twin-leafed model, a semi-fixed slave leaf offers identical structural features and has self-closing chain mechanisms or the patented Push&Go system for rapid release. The secondary leaf is hung on the door casing via three concealed hinges.

04 Casing consisting of laminated galvanised steel frame. This structural element is designed to screw into the wall masonry using six screws on each side covered by the special visible frame in laminated aluminium, coated steel or laminated stainless steel. An extra-thick aluminium profile serves as a shock absorber and joins the two frames, guaranteeing ease of maintenance and inspection.

05 The special casing and panel have no protrusions or edges, but consist solely of smooth surfaces. These guarantee an attractive appearance and ease of cleaning.

06 Handling accessories supplied: heavy-duty handle in aluminium, nylon with steel core or stainless steel. Key lock or vacant/engaged privacy unit.



THE STANDARD
HARD-WEARING
AND STRONG

RESISTANT TO INTENSIVE USE
SOLIDITY COMES FIRST

NORMAL Community is designed to cope with intensive use, bumps and water. It is therefore especially suited to public environments.

The rounded or square metal trim is available in stainless steel, epoxy powder-coated steel or anodised or coated aluminium.

The hollow-core leaf (50 mm thick) is surrounded by solid hardwood. The upper and lower rails are made using marine-grade plywood treated with water-repellent paint.

The painted edges of the door leaf are protected by an aluminium extrusion which covers the edge itself.

The leaf, with honeycomb core or high-density polystyrene filling, is clad with MDF panels (5 mm thick).

The surface is finished in laminated plastic at least 0.9 mm thick. The exclusive system fastening the trim to the subframe prevents it from moving, even under a powerful impact.

DESIGNED FOR COMMUNITY NEEDS
COMPLIANT WITH THE LAW

Designed for public spaces, NORMAL Community meets all the health and safety requirements of Legislative Decree 81/08 and all the hygiene regulations.

It guarantees a healthy environment and even mitigates noise pollution. The thickness and quality of the materials used guarantee a high level of soundproofing for the environment.

LOOKS COUNT
SIMPLE IN SO
MANY VERSIONS

The clean lines are due partly to the use of concealed hinges. A wide range of colours and jamb types make NORMAL Community stylish and versatile. It can be installed in any setting.



01 Hollow-core door with a finished thickness of 50 mm consisting of panel with honeycomb or HD polystyrene core, surrounded by a solid hardwood frame s, the upper and lower rails of which are in marine-grade plywood treated with water-repellent paint. The panel is clad with 5 mm MDF with an HPL laminated plastic surface at least 0.9 mm thick. Protecting the vertical sides of the leaf is a thick aluminium profile which wraps around the leaf itself. The leaf edges are flush with the panel surface.

02 In the twin-leafed model, a semi-fixed slave leaf offers identical structural features and has self-closing chain mechanisms or, at the top, the patented Push&Go system for rapid release. The secondary leaf is hung on the door casing via three concealed hinges.

03 Casing consisting of laminated galvanised steel frame. This structural element is designed to screw into the wall masonry using six screws on each side covered by the special visible frame in laminated aluminium, coated steel or laminated stainless steel. An extra-thick aluminium profile serves as a shock absorber and links the two frames, guaranteeing ease of maintenance and inspection.

04 The special casing and panel have no protrusions or edges, but consist solely of smooth surfaces. These guarantee an attractive appearance and ease of cleaning.

05 Handling accessories supplied: heavy-duty handle in aluminium, nylon with steel core or stainless steel. Key lock or vacant/engaged privacy unit.

NORMAL®
COMMUNITY



LONG-LASTING MOVEMENT GUARANTEED
SLIDING DOORS

The series of sliding doors reproduce the aesthetic lines of the ERGON® Community and NORMAL Community doors. The casing and panel guarantee that the components are flush and ensure excellent durability and ease of maintenance. The external sliding doors are supplied complete with hardware for the sliding leaf, whereas doors which slide inside the wall have no problem fitting the counterframes available on the market.

Optional accessories to fit to doors of COMMUNITY line			
	ERGON®	NORMAL	SLIDING
Ventilation grille	✓	✓	✓
Barrel locks with master key	✓	✓	✓
Peephole with clear or frosted glass	✓	✓	✓
Toplight with clear or frosted glass	✓	✓	
Door limiter for single or double-leaf doors		✓	
Hydraulic door closer on single and double-leaf doors		✓	
New PUSH & GO (patented system) for rapid release of the stile on double doors	✓	✓	



THE NEW CELEGON
PUSH&GO PATENT

Push & Go is the bright idea which solves the difficulty of opening the secondary leaf of twin-leaf doors. Instead of the cumbersome and awkward spring door chain, the Push & Go system opens the secondary leaf at the press of a switch conveniently located on the edge of the secondary leaf. Returning the secondary leaf to the close position closes the door, as for a single leaf. This solution makes double-leaf doors quick and simple to open and close in emergencies.